

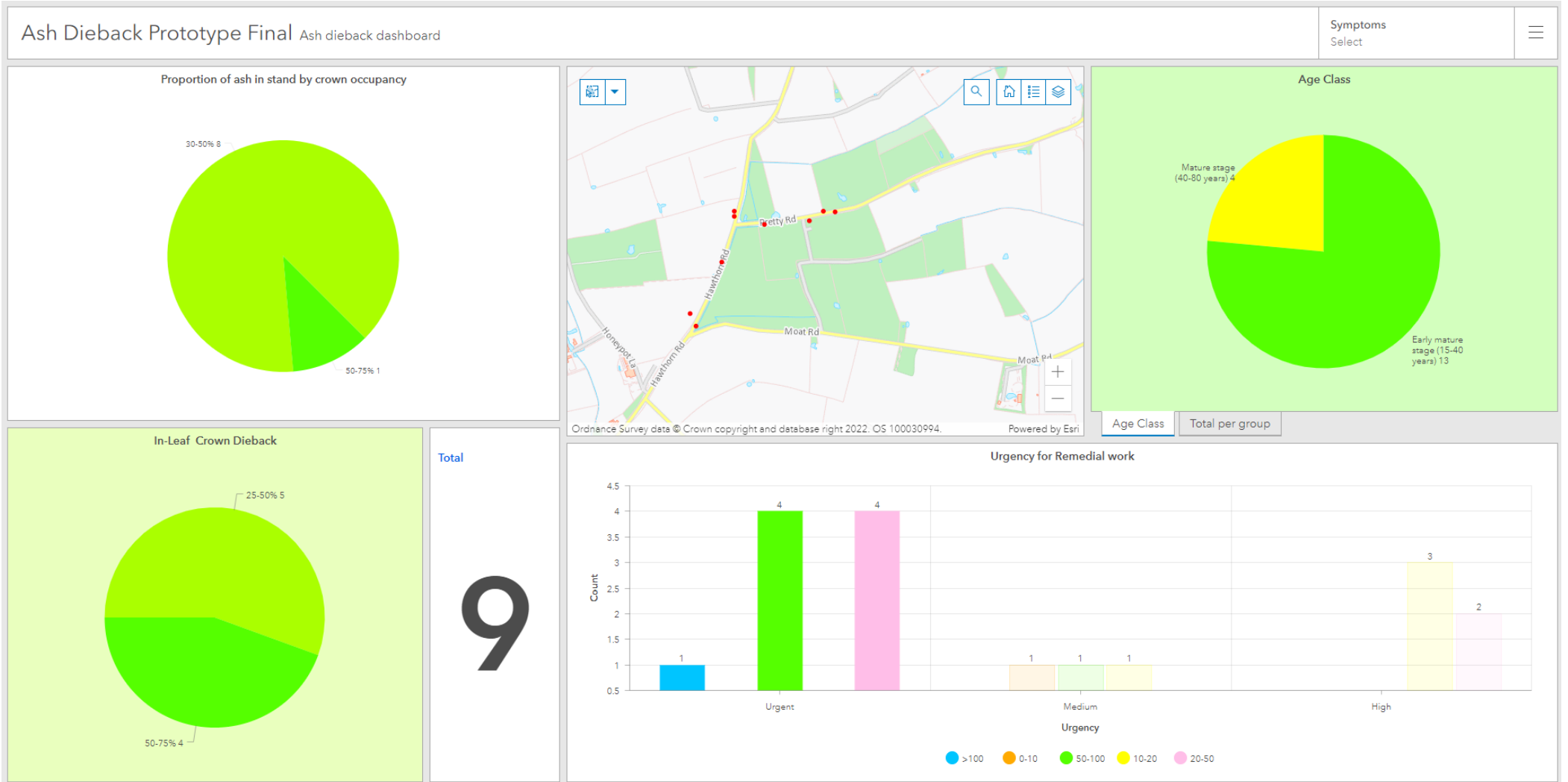
Roadside Ash – Urgent Trees For Removal

9 groups

Estimate 430 trees for removal.

75% 15-40 years old

25% 40-80 yrs



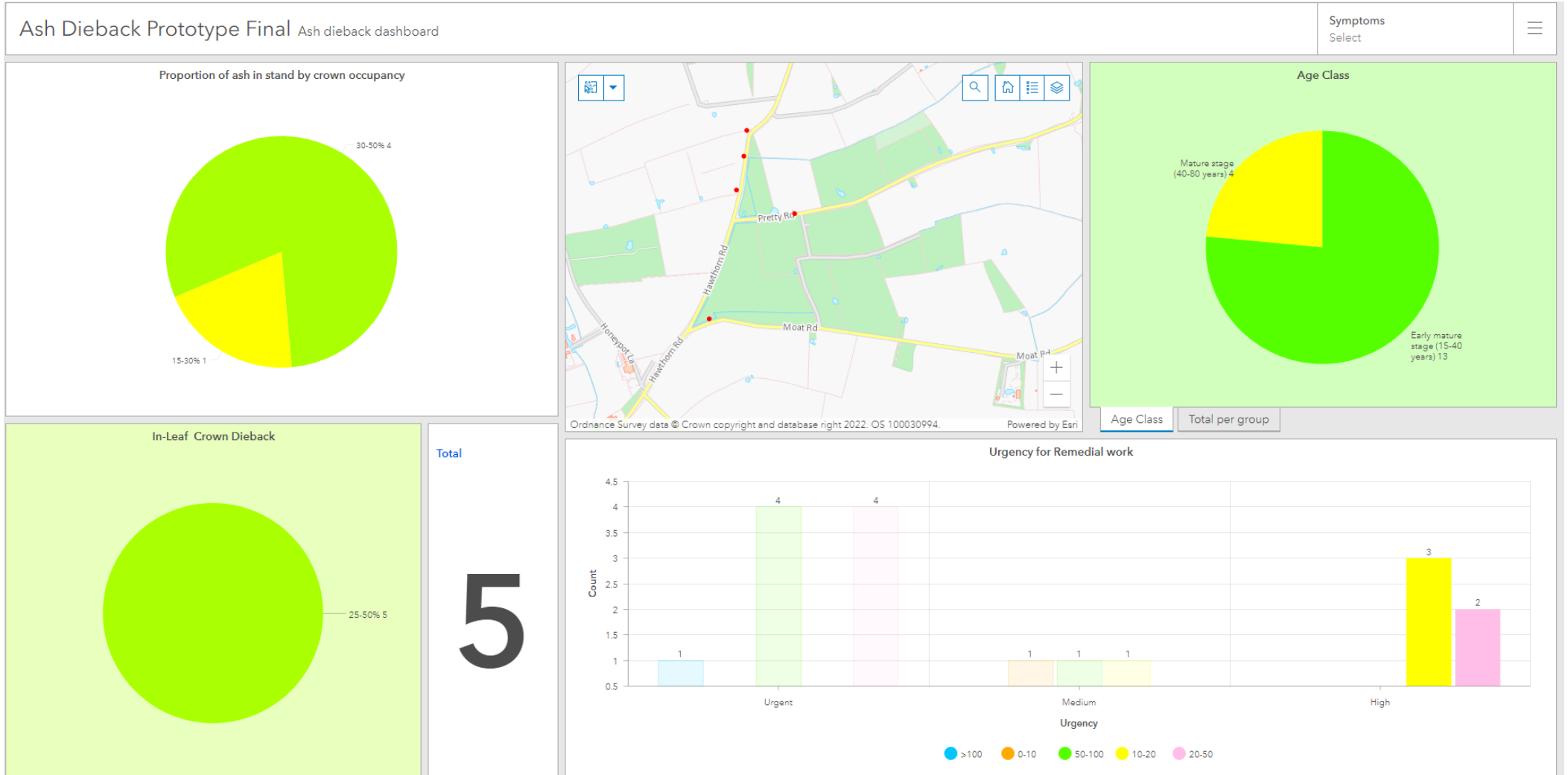
Roadside Ash – High Importance Trees For Removal

5 groups

Estimate 115 trees for removal.

75% 15-40 years old

25% 40-80 yrs



Roadside Ash – Medium Importance Trees For Removal

3 groups

Estimate 95 trees for removal or monitoring. 75% 15-40 years old 25% 40-80 yrs

